

# OFFICIAL ZONING DISTRICTS MAP

Adopted December 14, 1982

## BATESVILLE, ARKANSAS

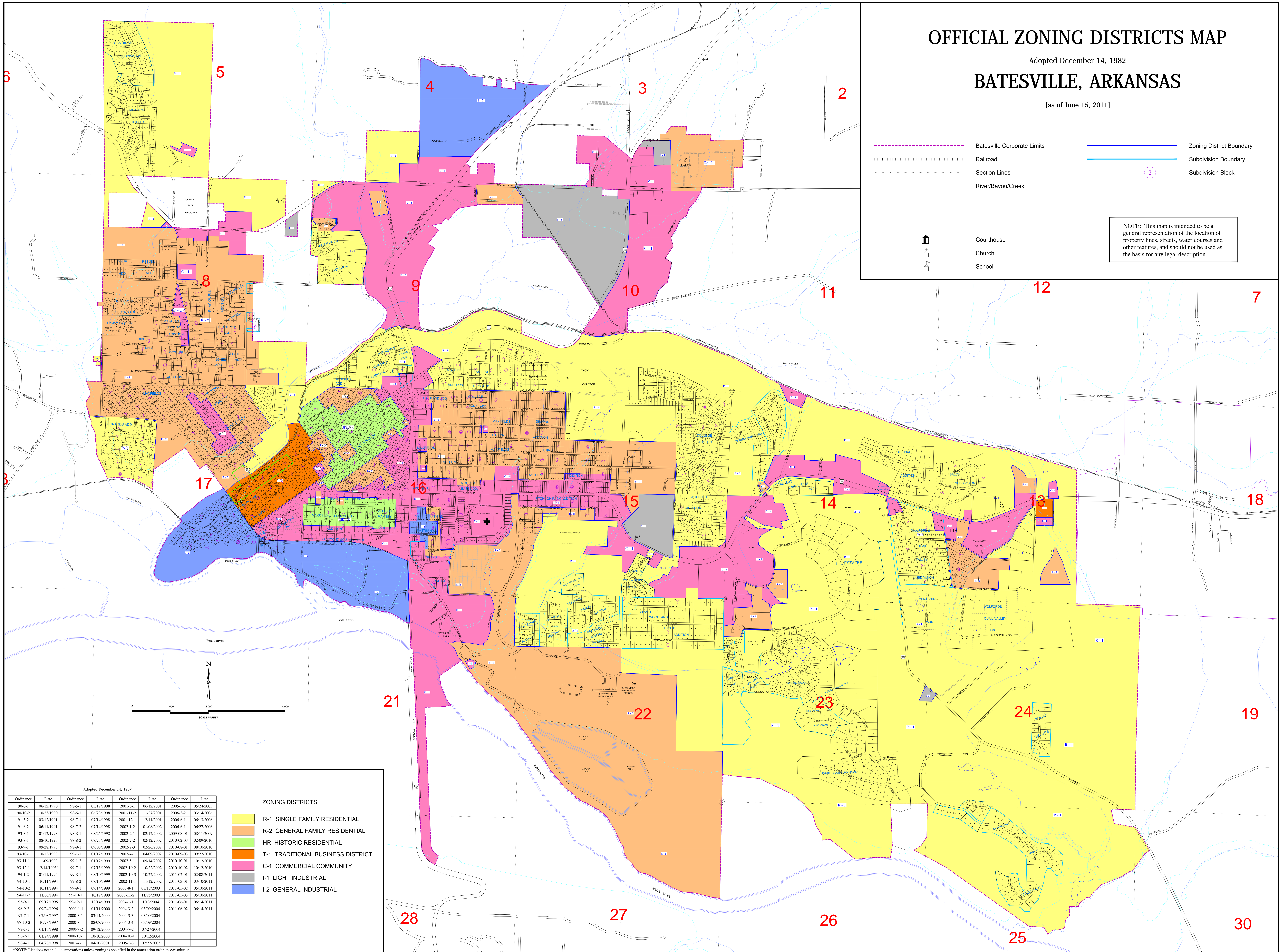
[as of June 15, 2011]

Batesville Corporate Limits  
 Railroad  
 Section Lines  
 River/Bayou/Creek

Zoning District Boundary  
 Subdivision Boundary  
 Subdivision Block

Courthouse  
 Church  
 School

NOTE: This map is intended to be a general representation of the location of property lines, streets, water courses and other features, and should not be used as the basis for any legal description



Adopted December 14, 1982

Ordinance	Date	Ordinance	Date	Ordinance	Date	Ordinance	Date
90-6-1	06/12/1990	98-5-1	05/12/1998	2001-6-1	06/12/2001	2005-5-3	05/24/2005
90-10-2	10/23/1990	98-6-1	06/23/1998	2001-11-2	11/27/2001	2006-3-2	03/14/2006
91-3-2	03/12/1991	98-7-1	07/14/1998	2001-12-1	12/11/2001	2006-6-1	06/13/2006
91-6-2	06/11/1991	98-7-2	07/14/1998	2002-1-2	01/08/2002	2006-6-1	06/27/2006
92-2-1	01/12/1992	98-8-1	08/25/1998	2002-2-1	02/12/2002	2009-08-01	08/11/2009
93-8-1	08/10/1993	98-8-2	08/25/1998	2002-2-2	02/12/2002	2010-02-03	02/09/2010
93-9-1	09/28/1993	98-9-1	09/08/1998	2002-2-3	02/26/2002	2010-08-01	08/10/2010
93-10-1	10/12/1993	99-1-1	01/12/1999	2002-4-1	04/09/2002	2010-09-03	09/22/2010
93-11-1	11/09/1993	99-1-2	01/12/1999	2002-5-1	05/14/2002	2010-10-01	10/12/2010
93-12-1	12/14/1993	99-7-1	07/13/1999	2002-10-2	10/22/2002	2010-10-02	10/12/2010
94-1-2	01/11/1994	99-8-1	08/10/1999	2002-10-3	10/22/2002	2011-02-01	02/08/2011
94-10-1	10/11/1994	99-8-2	08/10/1999	2002-11-1	11/12/2002	2011-03-01	03/10/2011
94-10-2	10/11/1994	99-9-1	09/14/1999	2003-8-1	08/12/2003	2011-05-02	05/10/2011
94-11-2	11/08/1994	99-10-1	10/12/1999	2003-11-2	11/25/2003	2011-05-03	05/10/2011
95-9-1	09/12/1995	99-12-1	12/14/1999	2004-1-1	1/13/2004	2011-06-01	06/14/2011
96-9-2	09/24/1996	2000-1-1	01/11/2000	2004-3-2	03/09/2004	2011-06-02	06/14/2011
97-7-1	07/08/1997	2000-3-1	03/14/2000	2004-3-3	03/09/2004		
97-10-3	10/28/1997	2000-8-1	08/08/2000	2004-3-4	03/09/2004		
98-1-1	01/13/1998	2000-9-2	09/12/2000	2004-7-2	07/27/2004		
98-2-1	01/24/1998	2000-10-1	10/10/2000	2004-10-1	10/12/2004		
98-4-1	04/28/1998	2001-4-1	04/10/2001	2005-2-3	02/22/2005		

\*NOTE: List does not include annexations unless zoning is specified in the annexation ordinance/resolution.

### ZONING DISTRICTS

- R-1 SINGLE FAMILY RESIDENTIAL
- R-2 GENERAL FAMILY RESIDENTIAL
- HR HISTORIC RESIDENTIAL
- T-1 TRADITIONAL BUSINESS DISTRICT
- C-1 COMMERCIAL COMMUNITY
- I-1 LIGHT INDUSTRIAL
- I-2 GENERAL INDUSTRIAL